

**Narrow your results**

Brand i

- Canadian (1)
- CNPV (1)
- JA Solar (1)
- Jinko (1)
- LG (1)
- Q-Cells (1)
- Renesola (1)
- Simax (1)
- Sunpower (1)
- Suntech (2)
- Tindo (1)
- Trina (1)
- Yingli (2)

Hide brands ^

Price i

\$209 \$499

Top filters (3) ^

Claimed nominal power i

250W 327W

Type i

- Monocrystalline (4)
- Monocrystalline (IBC) (1)
- Multicrystalline (10)

Test results (2) v

**Last updated: 23 January 2017**

With so many solar panel brands claiming to be the most efficient, or the best value, or the most technologically advanced, picking one above the rest can be very hard. We lab test and review the latest solar panels to help you choose. Our solar panel **buying guide** will help you decide which type of panel you need, our **member survey** details our members' experiences with different brands' solar panels, inverters and suppliers, and **how we test** explains our testing rigour and scoring method. The technically minded might like to read our **in-depth information** about what we found in this test.

Our test covers both **mono-** and **multicrystalline panels**, from Australian and international brands. This review includes the results from 12 months 'in the field': that's how long panels need to be tested, in all seasons, to give a true measure of their performance.

Our expert testers give every solar panel a thorough workout to help find the models that:

- are closest to their labelled **power output**
- deliver the **most power per square metre** of panel.

Our interactive comparison tool helps you find out which brands are **most efficient** and which have the **best warranties**. Note that there are no product images; most solar panels look very similar and appearance isn't a major factor when choosing them.



By

Show less ^

[Compare all products](#)



All the details, side by side

Displaying all 15 products

Sorted by: CHOICE Score (High-Low) v

**LG LG300NIC-B3**



Monocrystalline solar panel, 300W claimed nominal power.

CHOICE SCORE i

**96%**

Measured average power outdoors 12 months **293.7** i

Measured power in lab when new **306.8W** i

Yield per 1000W by label 12 months **979W** i

1 of 1 members of the CHOICE community who reviewed this product would recommend it. [Read what they say](#)

Compare

**\$373** i

**Jinko JKM250P-60-A**

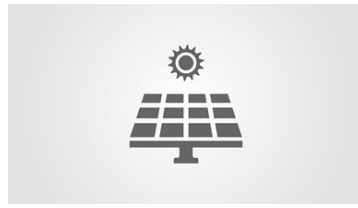
What's behind the score?



## Included in this review

- Overall score
- Measured average power outdoors 12 months
- Measured average power outdoors 3 months (W)
- Measured power in lab when new (W)
- Yield per 1000W by label 12 months (W)
- Yield per 1000W by label 3 months (W)
- Efficiency
- Good points
- Bad points
- Brand
- Model
- Price
- Claimed nominal power (W)
- Claimed power tolerance
- Width (mm)
- Length (mm)
- Type
- Colour
- Frame colour
- Warranty (yrs)
- Contact

Show less ^



Compare

\$215 i

Multicrystalline solar panel, 250W claimed nominal power.

CHOICE SCORE i

91%

Measured average power outdoors 12 months **238.4** i

Measured power in lab when new **254.7W** i

Yield per 1000W by label 12 months **953.8W** i

Be the first to write a review

## Canadian CS6P-250P



Compare

\$240 i

Multicrystalline solar panel, 250W claimed nominal power.

CHOICE SCORE i

89%

Measured average power outdoors 12 months **236.2** i

Measured power in lab when new **250W** i

Yield per 1000W by label 12 months **944.7W** i

1 of 1 members of the CHOICE community who reviewed this product would recommend it. [Read what they say](#)

## Suntech STP250-20/Wd



Compare

\$233 i

Multicrystalline solar panel, 250W claimed nominal power.

CHOICE SCORE i

89%

Measured average power outdoors 12 months **236.1** i

Measured power in lab when new **247.8W** i

Yield per 1000W by label 12 months **944.4W** i

Be the first to write a review

## Yingli YL270C-30b



Compare

\$310 i

Monocrystalline solar panel, 270W claimed nominal power.

CHOICE SCORE i

88%

Measured average power outdoors 12 months **254.3** i

Measured power in lab when new **266.9W** i

Yield per 1000W by label 12 months **942W** i

Be the first to write a review

## Trina TSM-260PC05A



Multicrystalline solar panel, 260W claimed nominal power.

CHOICE SCORE i

87%

Measured average power outdoors 12 months **242.8** i

Measured power in lab when new **256.5W** i

Yield per 1000W by label 12 months **934W** i

Be the first to write a review

Compare

\$238 i

### Tindo Karra-250



Multicrystalline solar panel, 250W claimed nominal power.

CHOICE SCORE i

86%

Measured average power outdoors 12 months **232** i

Measured power in lab when new **248W** i

Yield per 1000W by label 12 months **928W** i

1 of 1 members of the CHOICE community who reviewed this product would recommend it. [Read what they say](#)

Compare

\$234 i

### Yingli YL250P-29b



Multicrystalline solar panel, 250W claimed nominal power.

CHOICE SCORE i

86%

Measured average power outdoors 12 months **232.8** i

Measured power in lab when new **245.4W** i

Yield per 1000W by label 12 months **931.3W** i

Be the first to write a review

Compare

\$499 i

### Sunpower SPR-E20-327



Monocrystalline (IBC) solar panel, 327W claimed nominal power.

CHOICE SCORE i

85%

Measured average power outdoors 12 months **301.7** i

Measured power in lab when new **322.2W** i

Yield per 1000W by label 12 months **922.5W** i

Be the first to write a review

Compare

\$217 i

### JA Solar JAP6-60-260/3BB



Multicrystalline solar panel, 260W claimed nominal power.

CHOICE SCORE i

85%

Measured average power outdoors 12 months **239.9** i

Measured power in lab when new **252.6W** i

Yield per 1000W by label 12 months **922.8W** i

Be the first to write a review

Compare

**\$301** i

### Q-Cells Q.PRO-G3 255



Multicrystalline solar panel, 255W claimed nominal power.

CHOICE SCORE i

84%

Measured average power outdoors 12 months **234.4** i

Measured power in lab when new **250.3W** i

Yield per 1000W by label 12 months **919.4W** i

Be the first to write a review

Compare

**\$209** i

### Renesola JC260M-24/Bb



Multicrystalline solar panel, 260W claimed nominal power.

CHOICE SCORE i

84%

Measured average power outdoors 12 months **239.3** i

Measured power in lab when new **251W** i

Yield per 1000W by label 12 months **920.6W** i

Be the first to write a review

Compare

**\$263** i

### Simax SM660-250



Monocrystalline solar panel, 250W claimed nominal power.

CHOICE SCORE i

84%

Measured average power outdoors 12 months **230.2** i

Measured power in lab when new **251.7W** i

Yield per 1000W by label 12 months **921W** i

Be the first to write a review

Compare

**\$224** i

### CNPV CNPV-250P



Multicrystalline solar panel, 250W claimed nominal power.

CHOICE SCORE i

83%

Measured average power outdoors 12 months **228.6** i

Measured power in lab when new **244.9W** i

Yield per 1000W by label 12 months **914.6W** i

Be the first to write a review

Compare

\$294 i

## Suntech STP275S-20/Wem



Monocrystalline solar panel, 275W claimed nominal power.

CHOICE SCORE i

82%

Measured average power outdoors 12 months **250.3** i

Measured power in lab when new **265.4W** i

Yield per 1000W by label 12 months **910.2W** i

Be the first to write a review

Compare

\$430 i



### Product testing and reviews

We are Australia's largest source of expert reviews based on unbiased analysis and rigorous testing.



### Campaigns

By mobilising Australia's largest and loudest consumer movement, we fight to achieve real change on the issues that matter most.



### News and investigations

CHOICE doesn't accept advertising or sponsorship. This means we can uncover the truth about everyday consumer issues and provide practical advice to help consumers cut through the spin.



### Who we are

Set up by consumers for consumers, CHOICE is the consumer advocate that provides Australians with information and advice, free from commercial bias.